



Toothed lock washer external teeth 外齿锁紧垫圈



- DIN6797A
- SME B18.21.1, Type A.

Product introduction

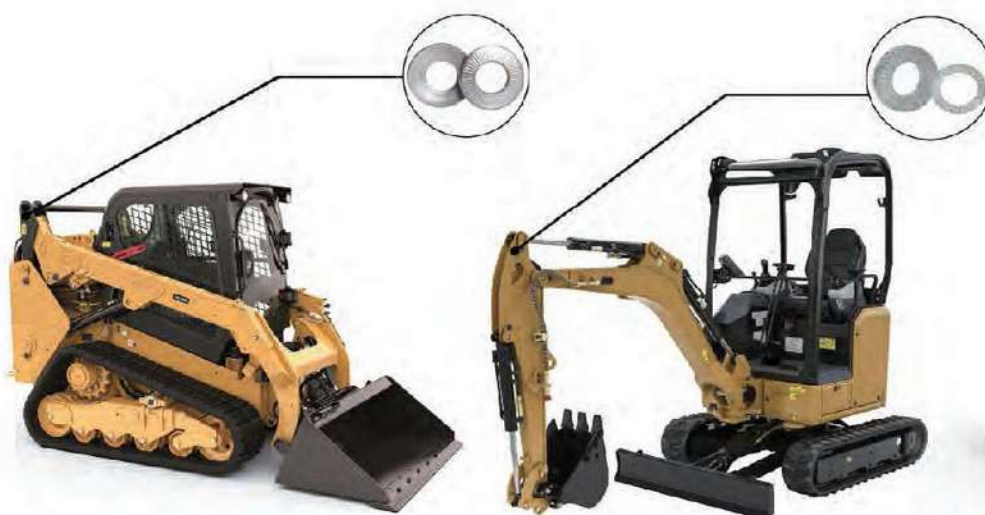
An external tooth lock washer has teeth that extend radially outward to bite into the bearing surface. Like internal tooth lock washers, they are designed to prevent a nut or bolt head from loosening with the strut action of the teeth. They work best with larger screw or bolt heads. External tooth lock washers provide maximum torsional resistance.

Features

- Provide maximum torsional resistance
- Work best with larger screws(round,pan,binding,etc.)

Product application:

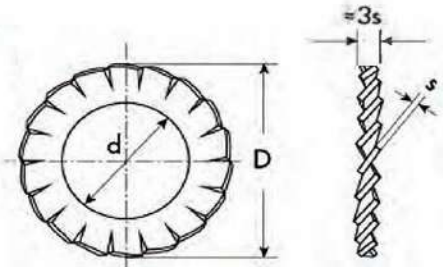
Used in conjunction with bolts or nuts to reduce friction and prevent loosening or dispersing pressure. After hardening, the angled tooth surface will play a better locking role. It is widely used in equipment manufacturing, engineering machinery, agricultural machinery, power transmission and distribution, Construction, shipbuilding and other industrial equipment





Toothed lock washer external teeth 外齿锁紧垫圈

- DIN6797A
- SME B18.21.1, Type R.



DIN 6797A External Tooth Lock Washer					
For screw with metric thread	d(mm)	dc(mm)	h(mm)	Number of teeth	Kg/1000pcs
M1.6	1.7-1.84	3.3-3.6	0.3	6	0.01
M2	2.2-2.34	4.2-4.5	0.3	6	0.025
M2.5	2.7-2.84	5.2-5.5	0.4	6	0.04
M3	3.2-3.38	5.7-6	0.4	6	0.045
M3.5	3.7-3.88	6.64-7	0.5	6	0.075
M4	4.3-4.48	7.64-8	0.5	8	0.095
M5	5.3-5.48	9.64-10	0.6	8	0.18
M6	6.4-6.62	10.57-11	0.7	8	0.22
M7	7.4-7.62	12.07-12.5	0.8	8	0.3
M8	8.4-8.62	14.57-15	0.8	8	0.45
M10	10.5-10.77	17.55-18	0.9	9	0.8
M12	13-13.27	19.98-20.5	1	10	1.0
M14	15-15.27	23.48-24	1	10	1.6
M16	17-17.27	25.48-26	1.2	12	2.0
M18	19-19.33	29.48-30	1.4	12	3.5
M20	21-21.33	32.38-33	1.4	12	3.8
M22	23-23.33	35.38-36	1.5	14	5
M24	25-25.33	37.38-38	1.5	14	6
M27	28-28.33	43.38-44	1.6	14	8
M30	31-31.39	47.38-48	1.6	14	9

Note: Product design hardness is

Spring steel: S60C / 60Si2MnA / 50CrVA

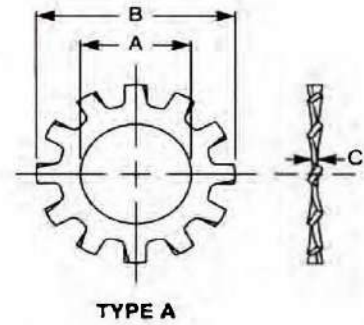
surface treatment: Blackened / Black / Mechanical galvanized /Dacromet / Geomet etc.

Stainless steel SUS301 / 304 / 316, 17-7PH hardened polished natural color treatment;



Toothed lock washer external teeth 外齿锁紧垫圈

- DIN6797A
- SME B18.21.1, Type R.



Nominal washer Size	A		B		C	
	Inside Diameter		Outside Diameter		Thickness	
	Max	Min	Max	Min	Max	Min
#3	_109	_102	_235	_220	_016	_010
#4	_123	_115	_260	_245	_018	_012
#5	_136	_129	_285	_270	_020	_014
#6	_150	_141	_320	_305	_022	_016
#8	_176	_168	_381	_365	_023	_018
#10	_204	_195	_410	_395	_024	_018
#12	_231	_221	_475	_460	_027	_020
1/4	_267	_256	_510	_494	_028	_023
5/16	_332	_320	_610	_588	_034	_028
3/8	_398	_384	_694	_670	_040	_032
7/16	_464	_448	_760	_740	_040	_032
1/2	_530	_513	_900	_880	_045	_037
9/16	_596	_576	_985	_960	_045	_037
5/8	_663	_641	1.070	1.045	_050	_042
3/4	_795	_768	1.260	1.220	_055	_047
7/8	_927	_897	1.410	1.380	_060	_052
1	1.06	1.025	1.620	1.590	_067	_059
1-1/8	1.142	1.128	1.827	1.797	_067	_059
1-1/4	1.293	1.269	2.202	2.172	_067	_059
1-1/2	1.58	1.56	_2.392	2.359	_099	_091

Note: Product design hardness is

Spring steel S60C / 60Si2MnA / 50CrVA

surface treatment blackened / black / mechanical galvanized / dacromet / Geomet etc.

Stainless steel SUS301 / 304 / 316, 17-7PH hardened polished natural color treatment;