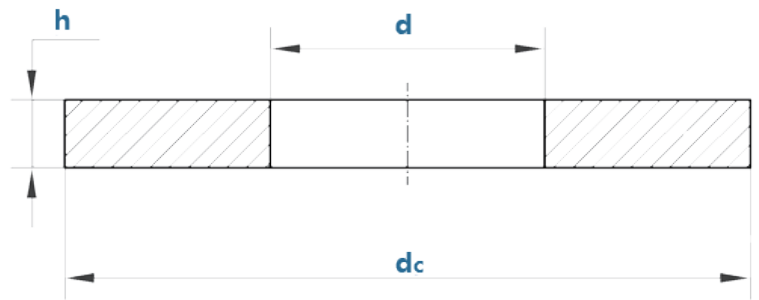


Flat Plain Washers DIN126

平垫圈DIN126



Size	d		dc		pitch	h		per 1000 units
	Min	Max	max	min		max	min	
M5	5.5	5.8	10	9.1	1	1.2	0.8	0.43
M6	6.6	6.96	12	10.9	1.6	1.9	1.3	0.991
M7	7.6	7.96	14	12.9	1.6	1.9	1.3	1.36
M8	9	9.36	16	14.9	1.6	1.9	1.3	1.73
M10	11	11.43	20	18.7	2	2.3	1.7	3.44
M12	13.5	13.93	24	22.7	2.5	2.8	2.2	6.07
M14	15.5	15.93	28	26.7	2.5	2.8	2.2	8.38
M16	17.5	17.93	30	28.7	3	3.6	2.4	11
M18	20	20.52	34	32.4	3	3.6	2.4	14
M20	22	22.52	37	35.4	3	3.6	2.4	16.4
M22	24	24.52	39	37.4	3	3.6	2.4	17.5
M24	26	26.52	44	42.4	4	4.6	3.4	31.1
M27	30	30.52	50	48.4	4	4.6	3.4	39.5
M30	33	33.62	56	54.1	4	4.6	3.4	50.5
M33	36	37	60	58.1	5	6	4	71
M36	39	40	66	64.1	5	6	4	87.4
M39	42	43	72	70.1	6	7	5	127
M42	45	46	78	76.1	7	8.2	5.8	175
M45	48	49	85	82.8	7	8.2	5.8	212
M48	52	53.2	92	89.8	8	9.2	6.8	284
M52	56	57.2	98	95.8	8	9.2	6.8	319
M56	62	63.2	105	102.8	9	10.2	7.8	398
M60	66	67.2	110	107.8	9	10.2	7.8	430
M64	70	71.2	115	112.8	9	10.2	7.8	462
M72	78	79.2	125	122.5	10	11.2	8.8	588
M80	86	87.4	140	137.5	12	13.6	10.4	903
M90	96	97.4	160	157.5	12	13.6	10.4	1210
M100	107	108.4	175	172.5	14	15.6	12.4	1660
M110	117	118.4	185	182.1	14	15.6	12.4	1770
M120	127	128.6	210	207.1	16	17.6	14.4	2760
M125	132	133.6	220	217.1	16	17.6	14.4	3060
M130	137	138.6	220	217.1	16	17.6	14.4	2920
M140	147	148.6	240	237.1	18	19.6	17.4	3990
M150	158	159.6	250	247.1	18	19.6	17.4	4170
M160	168	169.6	250	247.1	18	19.6	17.4	3800