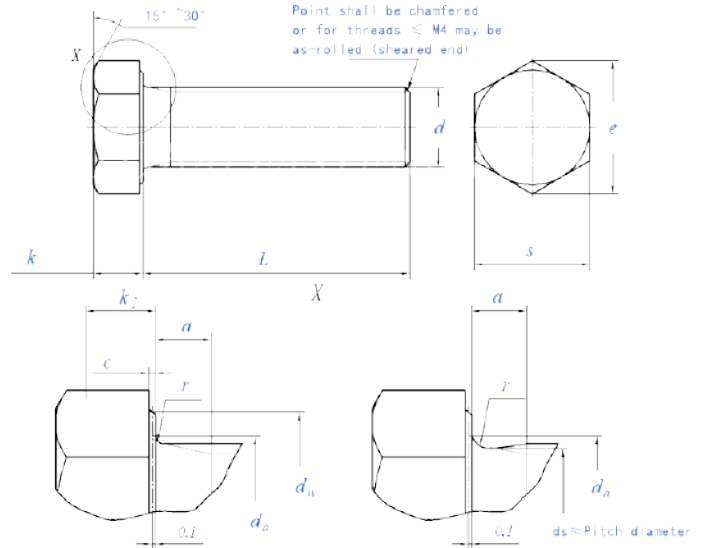


DIN933

全螺纹六角头螺栓DIN933



Thread Size	P	a			da	dw		e				k				k1	r	s			weight
		pitch	max	min		max	max	class A min	class B min	class A min	class B min	basic	class A min	class A max	class B min			class B max	min	min	
M1.6	0.35	1.05	0.1	0.25	2	2.4	-	3.41	-	1.1	0.98	1.22	-	-	0.7	0.1	3.2	3.02	-	-	
M2	0.4	1.2	0.1	0.25	2.6	3.2	-	4.32	-	1.4	1.28	1.52	-	-	0.9	0.1	4	3.82	-	-	
M2.5	0.45	1.35	0.1	0.25	3.1	4.1	-	5.45	-	1.7	1.58	1.82	-	-	1.1	0.1	5	4.82	-	-	
M3	0.5	1.5	0.15	0.4	3.6	4.6	-	6.01	-	2	1.88	2.12	-	-	1.3	0.1	5.5	5.32	-	-	
(M3.5)	0.6	1.8	0.15	0.4	4.1	5.1	-	6.58	-	2.4	2.28	2.52	-	-	1.6	0.1	6	5.82	-	-	
M4	0.7	2.1	0.15	0.4	4.7	5.9	5.7	7.66	7.5	2.8	2.68	2.92	2.6	3	1.9	0.2	7	6.78	6.64	-	
M5	0.8	2.4	0.15	0.5	5.7	6.9	6.7	8.79	8.63	3.5	3.35	3.65	3.26	3.74	2.28	0.2	8	7.78	7.64	-	
M6	1	3	0.15	0.5	6.8	8.9	8.7	11.05	10.89	4	3.85	4.15	3.76	4.24	2.63	0.25	10	9.78	9.64	-	
(M7)	1	3	0.15	0.5	7.8	9.6	9.4	12.12	11.94	4.8	4.65	4.95	4.56	5.04	3.19	0.25	11	10.73	10.57	-	
M8	1.25	3.75	0.15	0.6	9.2	11.6	11.4	14.38	14.2	5.3	5.15	5.45	5.06	5.54	3.54	0.4	13	12.73	12.57	-	
M10	1.5	4.5	0.15	0.6	11.2	15.6	15.4	18.9	18.72	6.4	6.22	6.56	6.11	6.69	4.28	0.4	17	16.73	16.57	-	
M12	1.75	5.25	0.15	0.6	13.7	17.4	17.2	21.1	20.88	7.5	7.32	7.68	7.21	7.79	5.05	0.6	19	18.67	18.48	-	
(M14)	2	6	0.15	0.6	15.7	20.5	20.1	24.49	23.91	8.8	8.62	8.98	8.51	9.09	5.96	0.6	22	21.67	21.16	-	
M16	2	6	0.2	0.8	17.7	22.5	22	26.75	26.17	10	9.82	10.18	9.71	10.29	6.8	0.6	24	23.67	23.16	-	
(M18)	2.5	7.5	0.2	0.8	20.2	25.3	24.8	30.14	29.56	11.5	11.28	11.72	11.15	11.85	7.8	0.6	27	26.67	26.15	-	
M20	2.5	7.5	0.2	0.8	22.4	28.2	27.7	33.53	32.95	12.5	12.28	12.72	12.15	12.85	8.5	0.8	30	29.67	29.16	-	
(M22)	2.5	7.5	0.2	0.8	24.4	30	29.5	35.72	35.03	14	13.78	14.22	13.65	14.35	9.6	0.8	32	31.61	31	-	
M24	3	9	0.2	0.8	26.4	33.6	33.2	39.98	39.55	15	14.78	15.22	14.65	15.35	10.3	0.8	36	35.38	35	-	
(M27)	3	9	0.2	0.8	30.4	-	38	-	45.2	17	-	-	16.65	17.35	11.7	1	41	-	40	-	
M30	3.5	10.5	0.2	0.8	33.4	-	42.7	-	50.85	18.7	-	-	18.28	19.12	12.8	1	46	-	45	-	
(M33)	3.5	10.5	0.2	0.8	36.4	-	46.5	-	55.37	21	-	-	20.58	21.42	14.4	1	50	-	49	-	
M36	4	12	0.2	0.8	39.4	-	51.1	-	60.79	22.5	-	-	22.08	22.92	15.5	1	55	-	53.8	-	
(M39)	4	12	0.3	1	42.4	-	55.9	-	66.44	25	-	-	24.58	25.42	17.2	1	60	-	58.8	-	
M42	4.5	13.5	0.3	1	45.6	-	59.9	-	71.3	26	-	-	25.58	26.42	17.9	1.2	65	-	63.1	-	
(M45)	4.5	13.5	0.3	1	48.6	-	64.7	-	76.95	28	-	-	27.58	28.42	19.3	1.2	70	-	68.1	-	
M48	5	15	0.3	1	52.6	-	69.4	-	82.6	30	-	-	29.58	30.42	20.9	1.6	75	-	73.1	-	
(M52)	5	15	0.3	1	56.6	-	74.2	-	88.25	33	-	-	32.5	33.5	22.8	1.6	80	-	78.1	-	