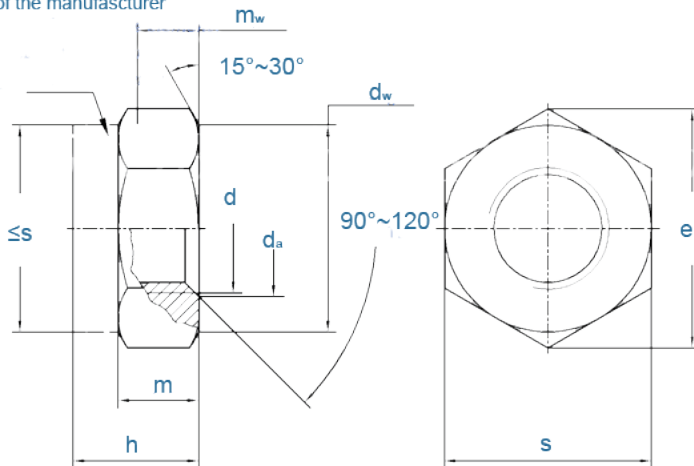


# DIN985

## 非金属嵌件薄型锁紧螺母DIN985

Prevailing torque element  
Shape at the discretion  
of the manufacturer



Thread Size	P			da		dw	e	h		m	mw	s		weight
	Coarse thread	Fine thread-1	Fine thread-2	min	max	min	min	max	min	min	min	max	min	kg
M3	0.5	/	/	3	3.45	4.6	6.01	4	3.7	2.4	1.65	5.5	5.32	0.5
M4	0.7	/	/	4	4.6	5.9	7.66	5	4.7	2.9	2.2	7	6.78	1
M5	0.8	/	/	5	5.75	6.9	8.79	5	4.7	3.2	2.75	8	7.78	1.4
M6	1	/	/	6	6.75	8.9	11.05	6	5.7	4	3.3	10	9.78	2.4
M7	1	/	/	7	7.75	9.6	12.12	7.5	7.14	4.7	3.85	11	10.73	3
M8	1.25	1	/	8	8.75	11.6	14.38	8	7.64	5.5	4.4	13	12.73	5.1
M10	1.5	1	1.25	10	10.8	15.6	18.9	10	9.64	6.5	5.5	17	16.73	10.6
M12	1.75	1.5	1.25	12	13	17.4	21.1	12	11.57	8	6.6	19	18.67	17.2
M14	2	1.5	/	14	15.1	20.5	24.49	14	13.3	9.5	7.7	22	21.67	26
M16	2	1.5	/	16	17.3	22.5	26.75	16	15.3	10.5	8.8	24	23.67	34
M18	2.5	2	1.5	18	19.5	24.9	29.56	18.5	17.66	13	9.9	27	26.16	45
M20	2.5	2	1.5	20	21.6	27.7	32.95	20	18.7	14	11	30	29.16	65
M22	2.5	2	1.5	22	23.7	29.5	35.03	22	20.7	15	12.2	32	31	75
M24	3	2	/	24	25.9	33.2	39.55	24	22.7	15	13.2	36	35	100
M27	3	2	/	27	29.1	38	45.2	27	25.7	17	14.8	41	40	162
M30	3.5	2	/	30	32.4	42.7	50.85	30	28.7	19	16.5	46	45	212
M33	3.5	2	/	33	35.6	46.6	55.37	33	31.4	22	18.2	50	49	317
M36	4	3	/	36	38.9	51.1	60.79	36	34.4	25	19.8	55	53.8	415
M39	4	3	/	39	42.1	55.9	66.44	39	37.4	27	21.5	60	58.8	499
M42	4.5	3	/	42	45.4	60.6	72.09	42	40.4	29	23.1	65	63.8	628
M45	4.5	3	/	45	48.6	64.7	76.95	45	43.4	32	24.8	70	68.1	771
M48	5	3	/	48	51.8	69.4	82.6	48	46.4	36	26.5	75	73.1	998