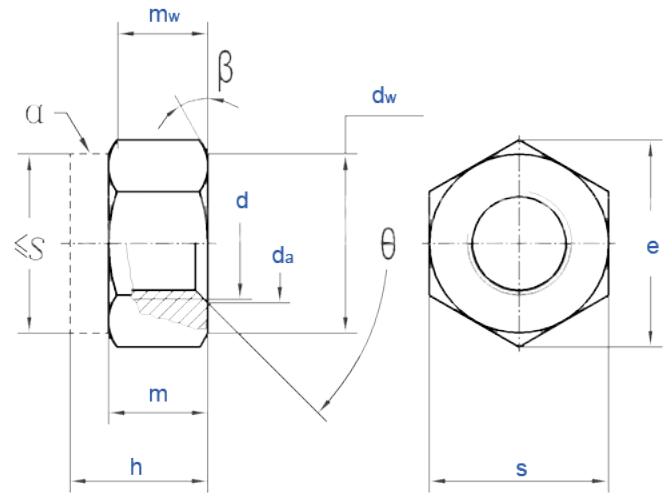


DIN982

非金属嵌件锁紧厚螺母DIN982



α : Prevailing torque element, shanpe optional
 β : $\beta = 15^\circ \sim 30^\circ$
 θ : $\theta = 90^\circ \sim 120^\circ$

Thread Size	P			da		dw	e	h		m	mw	s		weight kg
	Coarse thread	Fine thread-1	Fine thread-2	min	max	min		min	max			min	max	
M5	0.8	/	/	5	5.75	6.9	8.79	6.3	6	4.4	3.52	8	7.78	1.4
M6	1	/	/	6	6.75	8.9	11.05	8	7.7	4.9	3.92	10	9.78	3.1
M7	1	/	/	7	7.75	9.6	12.12	8.5	8.2	6.14	4.91	11	10.73	3.2
M8	1.25	1	/	8	8.75	11.6	14.38	9.5	9.14	6.44	5.15	13	12.73	6
M10	1.5	1	1.25	10	10.8	15.6	18.9	11.5	11.14	8.04	6.43	17	16.73	11.7
M12	1.75	1.5	1.25	12	13	17.4	21.1	14	13.64	10.37	8.3	19	18.67	16.6
M14	2	1.5	/	14	15.1	20.5	24.49	16	15.3	12.1	9.68	22	21.67	21
M16	2	1.5	/	16	17.3	22.5	26.75	18	17.3	14.1	11.28	24	23.67	37.8
M18	2.5	2	1.5	18	19.5	24.9	29.56	20	19.16	15.1	12.08	27	26.16	51.6
M20	2.5	2	1.5	20	21.6	27.7	32.95	22	20.7	16.9	13.52	30	29.16	68
M22	2.5	2	1.5	22	23.7	29.5	35.03	25	23.7	18.1	14.48	32	31	86
M24	3	2	/	24	25.9	33.2	39.55	28	26.7	20.2	16.16	36	35	127