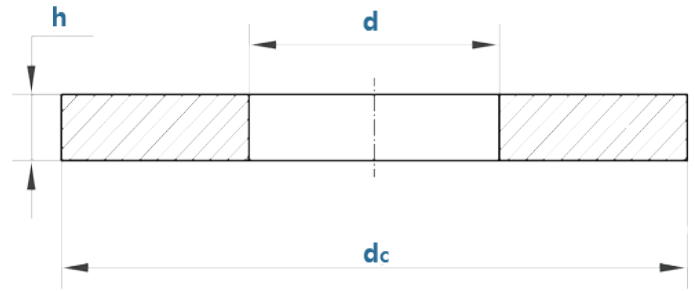


## ASTM F436M HARDENED WASHER 高强度公制垫圈F436M



Size	d		dc		h		weight
	max	min	max	min	max	min	
12	14.4	14	26	25.7	4.6	3.1	12.66
14	16.4	16	29	28.7	4.6	3.1	15.279
16	18.5	18	33	32.4	4.6	3.1	19.76
18	20.5	20	37	36.4	4.6	3.1	24.8
20	22.5	22	41	40.4	4.6	3.1	30.405
22	24.5	24	43	42.4	4.6	3.4	33.56
24	26.5	26	49	48.4	4.6	3.4	45.01
27	30.5	30	55	54.1	4.6	3.4	55.18
30	33.6	33	59	58.1	4.6	3.4	61.97
33	36.6	36	65	64.1	4.6	3.4	75.52
36	39.6	39	71	70.1	4.6	3.4	90.4
39	43.6	42.3	76	76.1	5.2	4.3	157.26
42	45.6	45	83	81.8	7.2	4.6	183.14
48	50.5	52	94	92.5	7.2	4.6	230.1
56	62.7	62	106	104.8	8.7	6.1	347.22
64	70.7	70	117	115.8	8.7	6.1	412
72	78.7	78	129	127.5	8.7	6.1	493.8
80	86.9	86	141	139.5	8.7	6.1	528.96
90	96.9	96	158	156.6	8.7	6.1	733.49
100	107.9	107	175	173.5	8.7	6.1	891.56